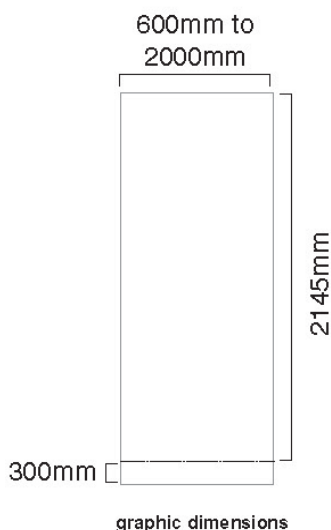


Original Banner 3



features & benefits

- Choice of 6 widths, from 600mm to 2000mm
- Increased internal housing for thicker graphics (up to 450 microns banner vinyl)
- Quick-change graphic release
- Quick-change universal rail
- Available in anodised silver or black powdercoated finish
- Bungee pole



Slide-in Graphic

hardware specifications

800mm Hardware Dimensions (mm):
 2245 max (h) x 818 (w) x 265 (d) approx.
 84.45" (h) x 32.2" (w) x 10.43" (d) approx.

Base Dimensions (mm):
 84 (h) x 818 (w) x 265 (d) approx.
 3.31" (h) x 32.2" (w) x 10.43" (d) approx.

Weight:
 4kg (9.92lbs) approx (including carry bag)

graphic specifications

Visible Graphic Dimensions (mm):
 2145 (h) x 600 to 2000 (w)
 84.45" (h) x 23.62" to 78.74" (w)

Substrate: Add 300mm (12") to base of graphic to allow for roller mechanism
 Recommended material thickness
 225 - 450 microns (8.86 - 17.72 Mils)

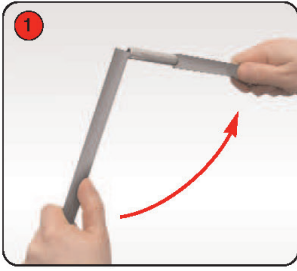
additional info

Included in kit:
 Base, top rail, bungee pole and carry bag

Please note that if the banner is over 1500mm wide it will be supplied with 2 poles.

Assembly Instructions

Banner stand assembly



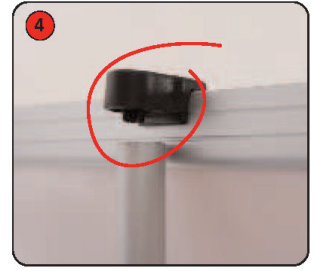
Open up the bungee pole until all 3 parts are fitted securely together.



Slot the pole into the hole on the base and push down to secure fit.

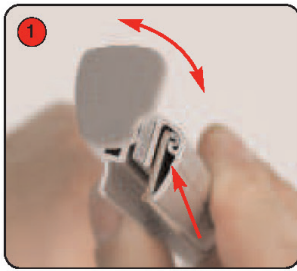


Pull graphic out of unit and tilt back to reach the top of the pole.

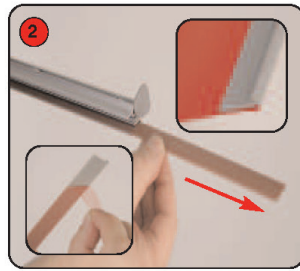


Fit pole into the top rail fixing.

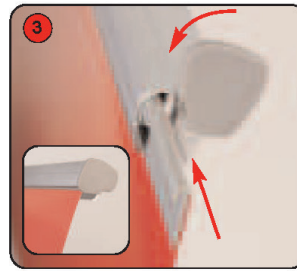
Graphic attachment - Adhesive rail option



Rotate the rail end cap to expose the plastic adhesive rail insert.



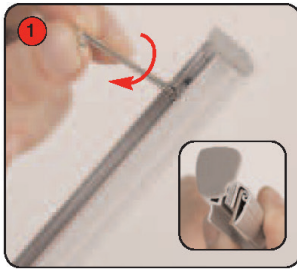
Slide the rail insert from the top rail. Adhere the insert to the **front** of the graphic.



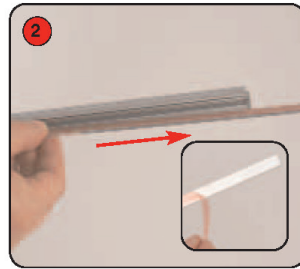
Slide the rail insert and graphic into the top rail. Close the rail end cap.

Important: Hold the top rail whilst lowering the banner to prevent damage to the graphic. (do not drop)

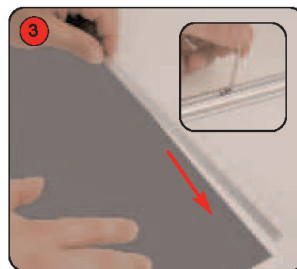
Graphic attachment - Grippa rail option (ideal for textiles and PVC)



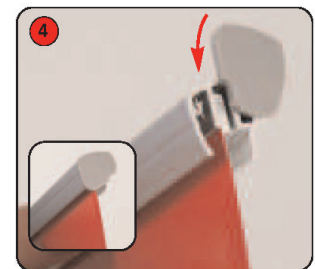
Using the Allen key supplied with the user instructions, loosen the top rail screws. Rotate the rail end cap to expose the steel flat bar.



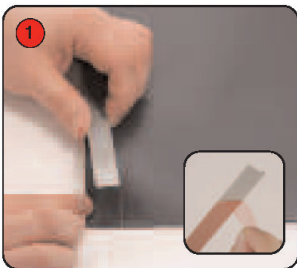
Slide the flat bar from the top rail and remove the backing paper.



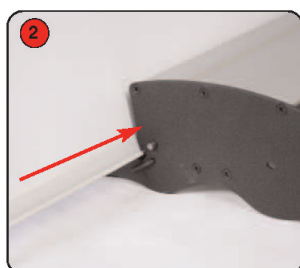
Adhere the flat bar to the **back** of the graphic. Slide the flat bar and graphic into the top rail. Tighten the screws to secure the top rail. Close the rail end cap.



Graphic attachment - Base



Adhere the insert to the **back** of the graphic.



Slide the insert and graphic into the base.



Whilst holding the graphic, remove the locking pin from the base and gently allow the graphic to retract.

WARNING: Always attach graphic to base and top rail before removing the locking pin.