

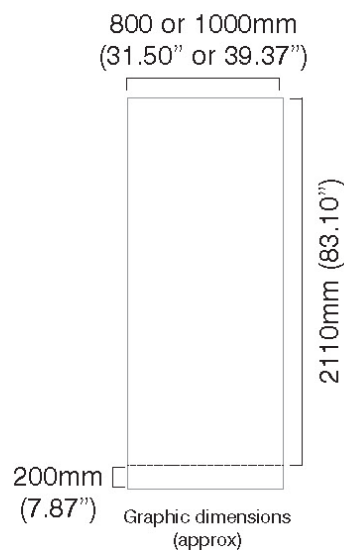


This smart roller banner is styled on a highly popular base profile, with a substantial anodised silver casing it provides the perfect combination of design with stability.

The spring loaded rail clamp system and slide on/off applicator makes it easy to apply or change your graphic.

features & benefits

- Stylish lightweight components
- Ideal for point of sale, retail or exhibition environments
- Choice of 800mm or 1000mm widths
- Available in anodised silver
- Quick to assemble and easy to use
- Includes quality foam padded carry bag



hardware specifications

Hardware Dimensions (mm):
2200 (h) x 825 (w) x 180 (d) approx.
86.61" (h) x 32.48" (w) x 7.10" approx.

Weight:
4.4kg (9.68lbs) approx
(including carry bag)

graphic specifications

Visible Graphic Dimensions (mm):
2110 (h) x 800 or 1000 (w) approx
83.10" (h) x 31.50" or 39.37" (w) approx

Substrate:
Add 200mm (7.87") to base of graphic to allow for roller mechanism.
Recommended material thickness
225 - 300 Microns (8.86 - 11.81 Mils)

additional info

Included in kit:
Top rail, base, bungee pole set and carry bag

Availability:
Anodised silver

Assembly Instructions

Banner stand assembly



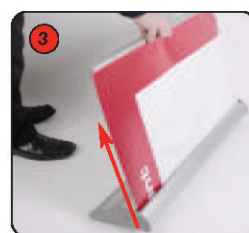
Kit includes: Top rail, base, bungee pole set and carry bag



1 Assemble the bungee pole set.



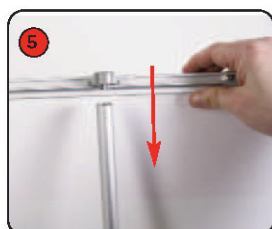
2 Fit the bungee pole into the banner stand base



3 Lift the top rail to raise the graphic from the base.



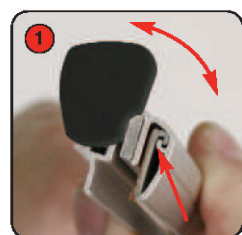
4 Lean the banner stand backwards and continue to extend the graphic.



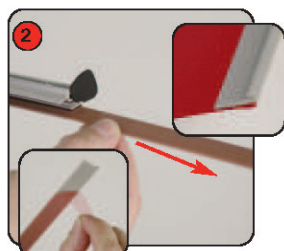
5 Secure the top rail cup onto the bungee pole.

Hold the Top rail whilst lowering the banner, (do not drop) to prevent damage to the graphic.

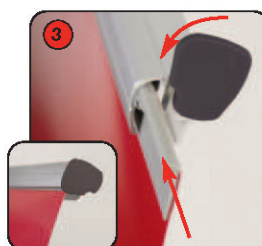
Graphic attachment - Adhesive rail option



1 Rotate the rail end cap to expose the plastic adhesive rail insert.

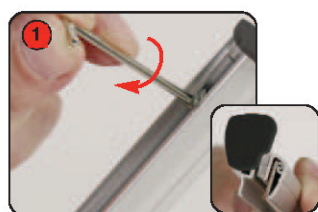


2 Slide the rail insert from the top rail. Adhere the insert to the front of the graphic.

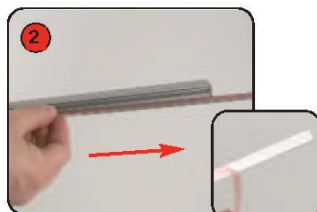


3 Slide the rail insert and graphic into the top rail. Close the rail end cap.

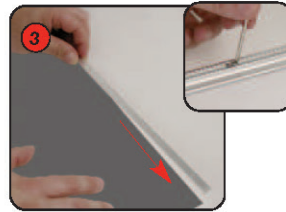
Graphic attachment - Grippa rail option (ideal for textiles and PVC)



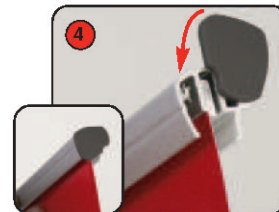
1 Using the Allen key stored in the base, loosen the top rail screws. Rotate the rail end cap to expose the steel flat bar.



2 Slide the flat bar from the top rail and remove the backing paper.



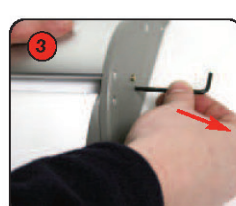
3 Adhere the flat bar to the back of the graphic. Slide the flat bar and graphic into the top rail. Tighten the screws to secure the top rail. Close the rail end cap.



1 Align and adhere hook fastener squarely to the bottom shorter edge of the graphic. (attach to back of graphic)



2 Securely attach the graphic to the loop fastener on the banner leader strip.



3 Whilst holding the Top rail remove the locking pin from the base and gently allow the graphic to retract.

After fitting, the graphic should be left for 24 hours before use, to ensure the adhesive bonds sufficiently.